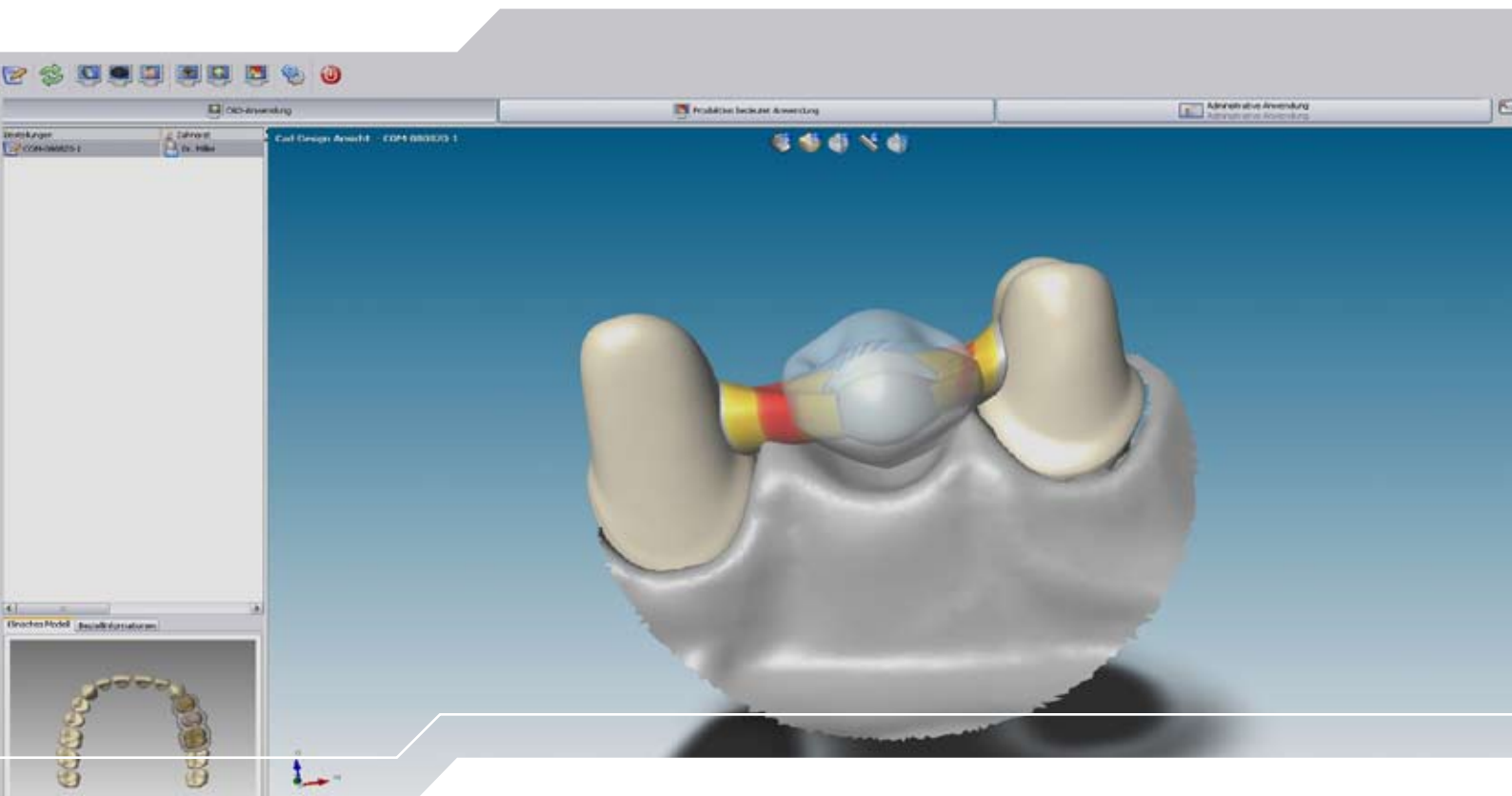


WIELAND



ZENO Cad Update User Manual

Copyright

by WIELAND Dental+Technik.
All rights reserved.

The information contained in this manual is subject to change without notice.

The software, including the documentation pertaining to it, is protected by copyright. You must therefore treat it as you would any other protected material.

Any person or persons transferring this software or this manual to any other storage medium for any purpose other than for their own use and without first obtaining the explicit written consent of WIELAND Dental+Technik render themselves liable to criminal prosecution.

Errors and suggestions

Please report any errors in this manual or submit any suggestions by email to:

service@wieland-dental.de

Queries regarding installation

If you have any queries regarding the installation, please contact our hotline:

WIELAND Dental+Technik
ZENO Support
Schwenninger Str. 13
75179 Pforzheim

Tel. + 49 (0) 7231 3705 400
Email: service@wieland-dental.de
Internet: www.wieland-dental.de

Installing the ZENO Cad Update

Preparation

In order to correctly install the new version of the ZENO Cad software, a few preparatory steps are necessary.

Backup

Back up your data before installing the update.

Close applications

Before installing the update, close any programs that may be running, including ZENOCClient, ZENO Server and any virus scanners.

You can find the active programs in the task bar next to the system clock. To close the applications, right click on each icon and select <<**Quit**>> or <<**Close**>>.

Internet

Ensure that you have access to a secure internet connection and that it is working correctly. An internet connection is absolutely essential.

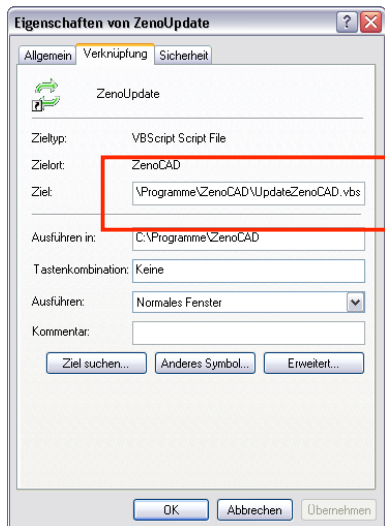
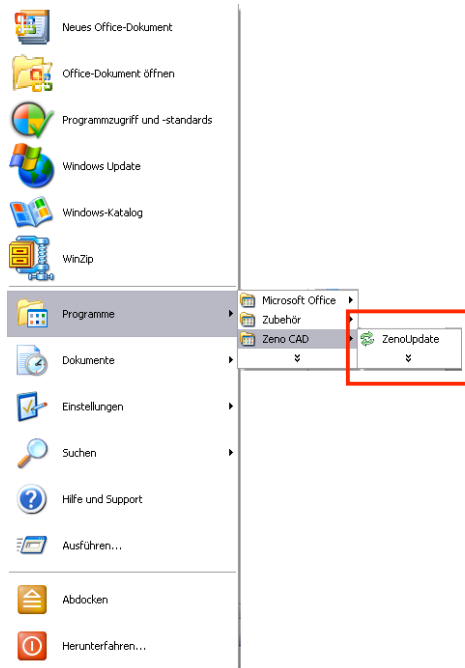
Installing the program update

This installation manual will guide you through the installation process.

Please note that the directory paths on your computer depend on local settings and may differ from ones described here.

Launch the ZENO Updater to start the update process.

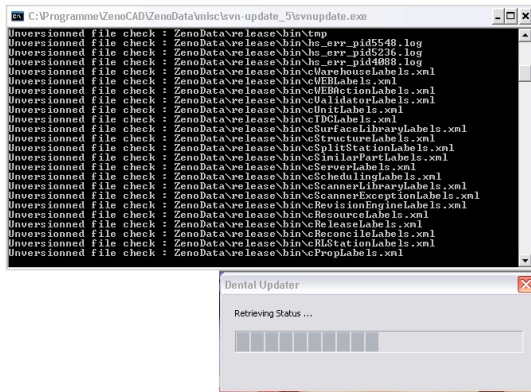
If an error message is displayed, right click on the ZENOUpdate icon and select **<<Properties>>** to verify and/or select the correct path and file name for the ZENO Cad Software.



The target path depends on your installation, i.e. the directory path depends on the installation directory.

The file name is: **UpdateZenoCAD.vbs**.

If the directory names or file names are incorrect, replace them with the correct ones.

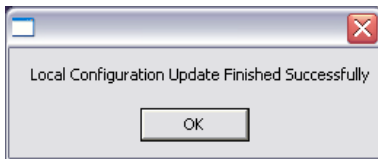


The update will be launched in two windows.

As soon as the message <<Done>> is displayed in the large window or the installation bar in the small window is complete, click on the small window.



Click on <<OK>> to proceed with the installation. The installation continues in both windows without further user intervention.



Click on <<OK>> to complete the installation.

EXPECT THE DIFFERENCE! BY WIELAND.

As a major supplier of dental system solutions, WIELAND embodies both tradition and progress in matters of dental products and technology. Since our company was founded in 1871, we have stayed true to our corporate philosophy of combining tradition, innovation and quality with the best in customer care. Today, our core competencies and key strengths lie in the forward-looking integration of technologies and materials for dental prosthetics. This ensures that patients can trust in the quality of their dentures, and our partners in dental practices and laboratories can continue with confidence on the path to digitalisation and greater competitiveness.

WIELAND offers a wide range of products and services from CAD/CAM technologies and dental alloys to veneering ceramics and electroforming. Thanks to our worldwide presence and international network of regional branches and local agencies, WIELAND is never far away, and your contact person can always be located via the Internet.

www.wieland-international.com

WIELAND Dental+Technik GmbH & Co. KG
Schwenninger Straße 13, 75179 Pforzheim, Germany
Fon +49 72 31/37 05-0, Fax +49 72 31/35 79 59