

# New Generation Ceramics



# New Generation Ceramics - veneering ceramics with a leucite-free HDAM™\* microstructure

## ■ Innovative microstructure

- Extremely homogeneous, gingiva friendly and plaque resistant surface
- Easily polished in the mouth

## ■ Indication

- Firing temperature: 900 °C (1<sup>st</sup> dentine bake)
- All densely sintered or infiltrated aluminium oxide structural ceramics with a CET of approx.  $8 \cdot 10^{-6} \text{K}^{-1}$  (25-500 °C)

## ■ Aesthetic

- Perfect color match with all WIELAND ✕ veneering ceramics
- Exceptionally natural color effects
- Fulfills the highest aesthetic requirements
- Light dynamics are standard for us

## ■ Reliable

- Bonds best to all the indicated substructures
- Simple and reliable firing programme  
cf. T.Klinke, R.Biffar, Quintessenz Zahntechnik 26 (12) 1317-30 (2000)
- High fracture strength: 120 MPa

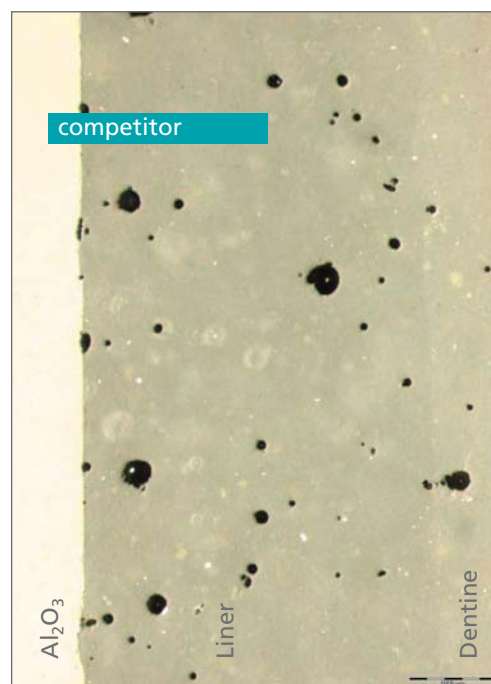
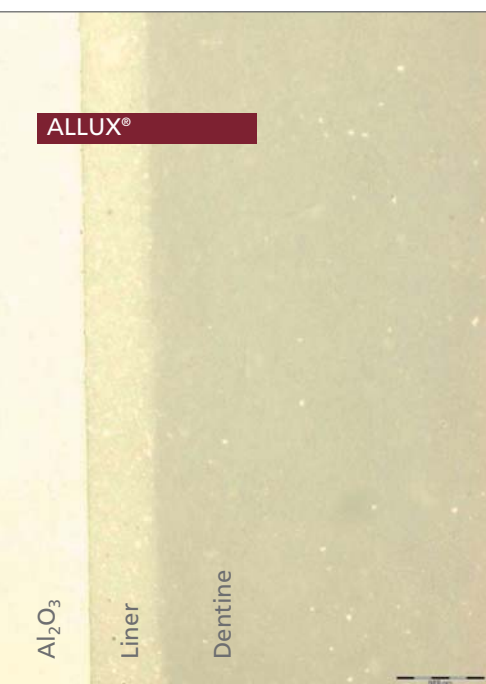
## ■ Efficient

- Easy and accurate matching of the V-shade guide
- Minimal shrinkage
- Reliable application techniques
- Excellent handling properties and robust firing characteristics

## ■ Innovative

- Leucite-free HDAM™\* microstructure
- Opalescence remains stable through multiple firings

\* High-density advanced microstructure



## ■ Best possible bonding

- The light optical microscope images left demonstrate the density of ALLUX® liners compared with a similar product from a competitor.

Build-up:  $\text{Al}_2\text{O}_3$ /liner/dentine  
(both photographs are to the same magnification)

A (left) shows an extremely homogeneous, bubble-free liner and dentine layer compared with the competitor's product (right). The result is the best possible bonding to the aluminium oxide substructure.

ALLUX®: leucite-free HDAM™ microstructure

fine = good

Wieland Metall-Labor 2µm Vergrößerung= 5.00 K X



■ Innovative HDAM™ microstructure

Leucite-free, single phase ALLUX® features a tension-free and fissure-free structure

■ The advantage of the ALLUX® leucite-free HDAM™ microstructure

The homogeneous, fissure-free ALLUX® microstructure is shown in the top photograph. (Both photographs are to the same magnification.)

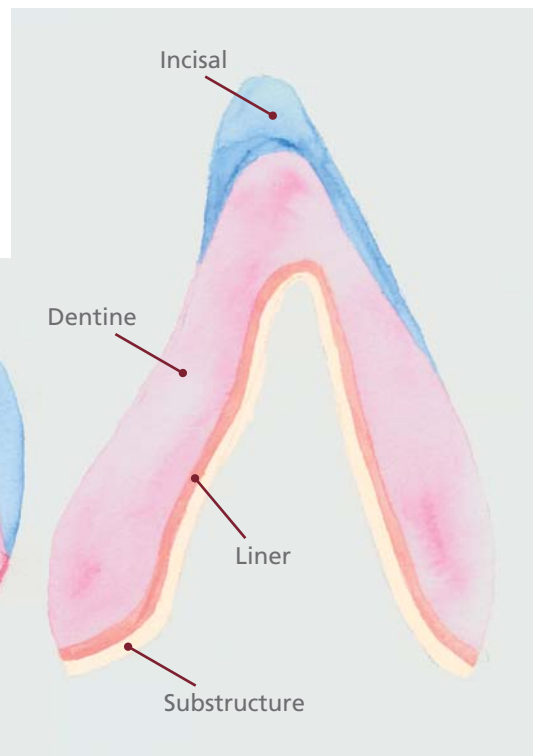
conventional Al<sub>2</sub>O<sub>3</sub> veneering ceramic

coarse = poor

Wieland Metall-Labor 3µm Vergrößerung= 5.00 K X



■ Standard build-up procedure



Drawings by Sylvia Neutzling

## 2-Color Set

The ALLUX® 2-Color Set contains for the shades A2 and A3:

- Liner
- Dentine
- Incisal
- Chromatix™ (chroma dentine)
- Flu Dentine (fluorescent dentine)
- Opale Incisal (opal enamel)
- Transpa Clear / Transpa Neutral
- Stain
- Glaze
- X Carving Liquid Retain (mixing liquid)
- Liner Liquid Optimix (liner mixing liquid)
- X Stain Liquid (stain and glaze liquid)



Ceramic works and Photography  
by Christian Ferrari

**Technical Hotline:**  
**+49 60 07 / 91 76 - 222**

**WIELAND**  
Dental + Technik

WIELAND Dental + Technik  
GmbH & Co. KG  
Schwenninger Straße 13  
75179 Pforzheim, Germany

Fon +49 72 31/37 05-0  
Fax +49 72 31/35 79 59

www.wieland-international.com  
info@wieland-international.com

### WIELAND Representations

#### AUSTRALIA

GUNZ DENTAL SUPPLY CO. LTD  
26-34 DUNNING AVE  
Rosebery, N.S.W. 2018  
Free Call 1800 025 300  
Fax +61 2 9935 6666

#### AUSTRIA

Wieladent Handelsges. mbH  
Kraimstalstraße 1  
4860 LENZING  
Fon +43 76 72/9 39 01  
Fax +43 76 72/9 39 03

#### BENELUX

Cordent BV  
Dorpsweg 23  
3738 CA MAARTENSDIJK  
Fon +31 3 46/21 22 23  
Fax +31 3 46/21 22 24

#### CHINA

WIELAND Dental + Technik  
Beijing Representative Office  
8, North Dongsanhuan Road  
100004 BEIJING  
Fon +86 10/65 90 70 71  
Fax +86 10/65 90 70 72

#### FRANCE

WIELAND Dental SAS  
40, avenue de l'Europe  
69140 RILLIEUX LA PAPE  
Fon +33 4 78 88 57 02  
Fax +33 4 78 88 67 13

#### GREECE

NEOdental  
Patr. Grigoriou E 50  
13671 K. ACHARNAI-ATHENS  
Fon +30 210/2 38 81 18  
Fax +30 210/2 38 97 82

#### ITALY

WIELAND Dental s.r.l.  
Via Bernardino Ferni, 2  
21013 GALLARATE (VA)  
Fon +39 03 31/70 11 05  
Fax +39 03 31/24 65 81

#### SWITZERLAND

WIELAND Dental + Technik  
GmbH & Co. KG  
Niederlassung Bern  
Landhausweg 11/13  
3007 BERN  
Fon +41 31 377 07 07  
Fax +41 31 372 07 07

#### UNITED STATES OF AMERICA

WIELAND Dental Systems, Inc.  
282-A QUARRY ROAD  
Milford, CT 06460  
Toll Free 866/08 76/08 85  
Fax +1 203/877/86 61

For distributors in other countries  
please contact the export department  
of WIELAND Dental+Technik.  
**Tel. +49 72 31/37 05-0**

Distributed by: